

**Patent #5105349 & 7410150 B1**

Aladdin Light Lift, Inc. manufactures motorized winches for raising and lowering chandeliers and high bay lights. Aladdin Light Lifts are sold throughout the United States, Asia, Canada, Europe, Australia, Central America, and South America.

With just the turn of a key, or press of a button, eliminate the need for ladders, scaffolding, or heavy equipment when installing, cleaning, and relighting hard to reach chandeliers and high bay lights.

Retailers, churches, warehouses, theaters, fitness centers, manufacturing facilities, home owners, hotels, banks, restaurants, casinos: anyone with a hard to reach light fixture should take advantage of the Aladdin Light Lift.

Aladdin Light Lifts are patented and UL listed.

**Aladdin Light Lift, Inc.**

**61 Shields Road**

**Huntsville, AL 35811**

**256.429.9700 phone**

**256.429.9708 fax**

**customerservice@aladdinlightlift.com**

**www.aladdinlightlift.com**



US & Canada



Catalog Date:  
08/2021

# DETERMINE THE MODEL

MARK THE APPROPRIATE BOX TO ASSIST AN ALADDIN LIGHT LIFT REPRESENTATIVE IN DETERMINING THE PROPER LIGHT LIFT:

1. Is this a domestic or international installation?  
☐ Domestic      ☐ International
2. Is this a commercial or residential installation?  
☐ Commercial      ☐ Residential
3. Is this a chandelier or high bay fixture?  
☐ Chandelier      ☐ High Bay Fixture
4. Is the light lift mounting directly above the light fixture (standard mount) or in an offset location (remote mount)? *See page 30.*  
☐ Standard Mount      ☐ Remote Mount
5. What is the fixture weight?  
☐ ≤ 200lbs.      ☐ ≤ 300lbs.      ☐ ≤ 700lbs.      ☐ ≤ 1000lbs.
6. What is the required voltage for the light circuit?  
☐ 110V      ☐ 208V      ☐ 240V      ☐ 277V
7. What is the required voltage for the motor circuit?  
☐ 110V      ☐ 208V      ☐ 240V      ☐ 277V
8. What is the fixture wattage?  
☐ ≤1650W      ☐ ≤2200W      ☐ ≤3300W(2-15A Circuits)
9. What is the ceiling height?  
☐ <30'      ☐ >30'
10. Which controller?  
☐ Key-Switch      ☐ Smart-Lift      ☐ Wireless

# TABLE OF CONTENTS

## RESIDENTIAL LIGHT LIFTS

STANDARD MOUNT.....	4
ALL200.....	5
ALL300.....	6
ALL700.....	7
ALL1000.....	8
REMOTE MOUNT.....	9
ALL200RM.....	11
ALL300RM.....	12
ALL700RM.....	13
ALL1000RM.....	14

## COMMERCIAL LIGHT LIFTS

STANDARD MOUNT.....	15
ALL200-CM.....	16
ALL300-CM.....	17
ALL700-CM.....	18
ALL1000-CM.....	19
REMOTE MOUNT.....	20
ALL200RM-CM.....	22
ALL300RM-CM.....	23
ALL700RM-CM.....	24
ALL1000RM-CM.....	25

## UPGRADES

Wireless Controller.....	26
Key-Switch, Smart-Lift, Voltage Options, Relamping cord.....	27

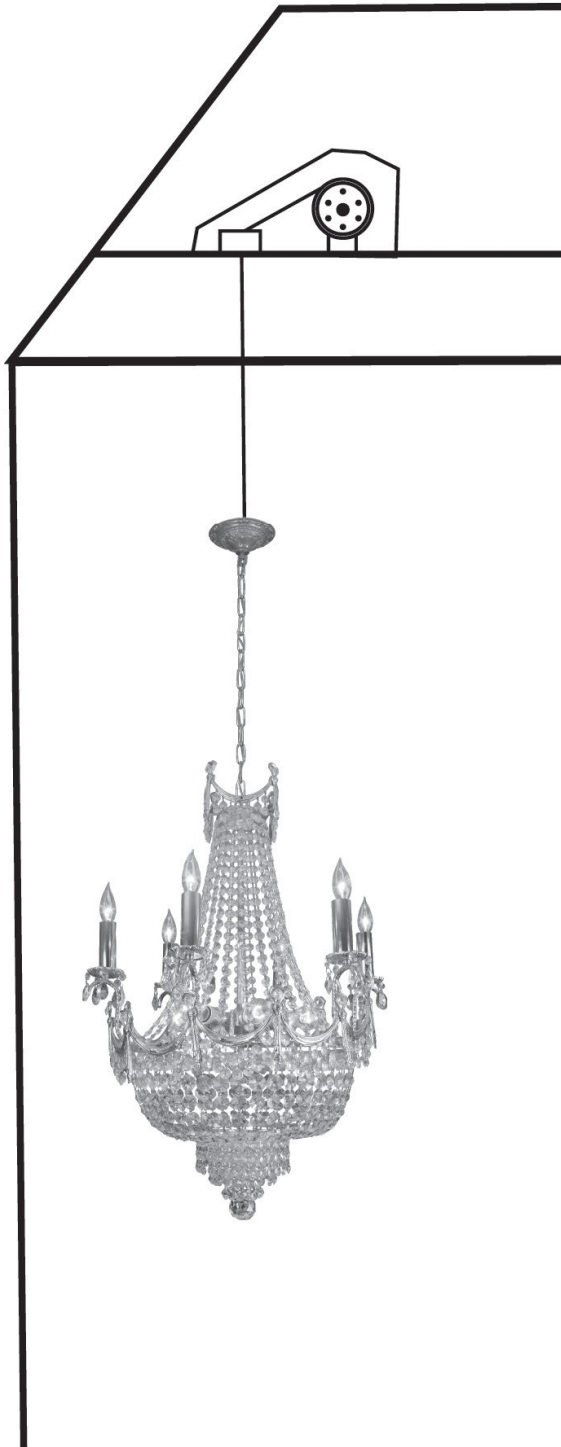
## SPECIAL MOUNT

Sloped Ceilings.....	28
Torque Reels .....	29
Fixture Installation Hardware.....	30
Flush Mount Chandelier.....	31
'Standard Mount' vs 'Remote Mount' Diagram.....	32

## WARRANTY AGREEMENT..... 33

## RMA POLICY..... 34

# RESIDENTIAL STANDARD MOUNT



-Standard mount light lifts can **ONLY** be mounted directly above the chandelier.

-Aladdin recommends at least three feet of vertical access space directly above the fixture for installation and motor accessibility.

-See the **RESIDENTIAL REMOTE MOUNT** section on page 9 if the light lift cannot mount directly above the fixture.

-Residential models are 110V only. For 208V, 240V or 277V see the **COMMERCIAL STANDARD MOUNT** models on page 15.

-Residential models have one controller per lift. To control up to 25 light lifts from a single LCD control panel see **COMMERCIAL STANDARD MOUNT** models on page 15.

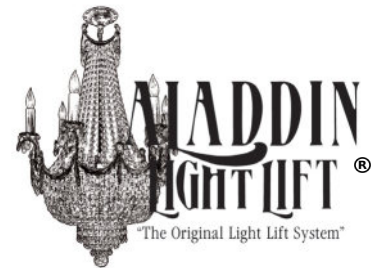
-If this model is **NOT** being installed in a residence, see the **COMMERCIAL STANDARD MOUNT** section on page 15.

-Call Aladdin customer service at (256) 429-9700 or email [customerservice@aladdinlightlift.com](mailto:customerservice@aladdinlightlift.com) for ordering assistance.

For installation instructions, visit [www.aladdinlightlift.com/models](http://www.aladdinlightlift.com/models).

**MODEL  
NUMBER:**

**ALL200**



Patent #5105349 & 7410150 B1

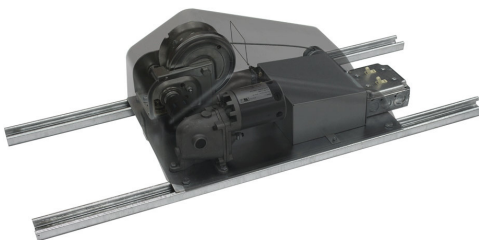
The ALL200 is a 'residential grade' motorized winch for the raising and lowering of a light fixture. This 'standard mount' lift is designed to be installed in accessible locations, directly above the fixture. Please see page 30 for 'standard mount' vs 'remote mount' diagram.

## Specifications

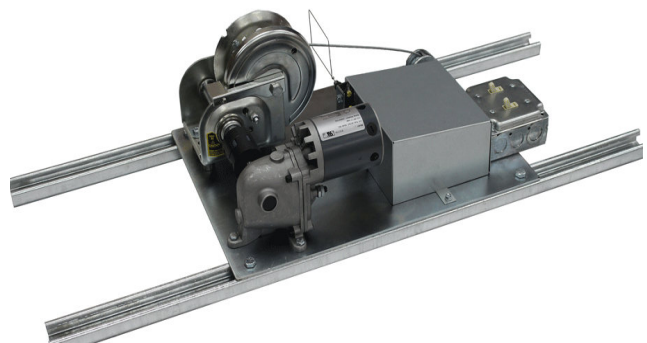
Maximum Lifting Capacity.....	200 lbs.
Application.....	Residential (Plastic dust cover and Romex)
Voltage.....	110V
Mounting Location.....	Standard Mount
	Directly above fixture only
Winch Cable Length.....	35 ft.
Light Wattage Capacity.....	1 x 15 amp circuit - 1650 watts
Controller.....	Keyswitch
Controller Wire.....	50 ft.
Dimensions of unit.....	14" wide x 19" long x 9" high
	Mounted on two 36" channel struts
Shipping Weight.....	47 lbs.

## Upgrades

Controller.....	Smart-Lift (see page 27)
	Wireless (see page 26)
Winch Cable Length.....	65 ft.
	90 ft.
	120 ft.
Light Wattage Capacity.....	1 x 20 amp circuit - 2200 watts
	2 x 15 amp circuits - 3300 watts
Controller Wire.....	100 ft.

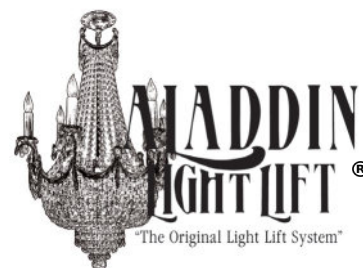


**ALADDIN®**



**MODEL  
NUMBER:**

**ALL300**



Patent #5105349 & 7410150 B1

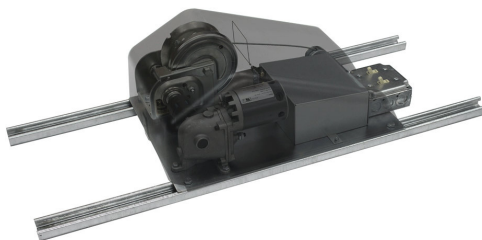
The ALL300 is a 'residential grade' motorized winch for the raising and lowering of a light fixture. This 'standard mount' lift is designed to be installed in accessible locations, directly above the fixture. Please see page 30 for 'standard mount' vs 'remote mount' diagram.

## Specifications

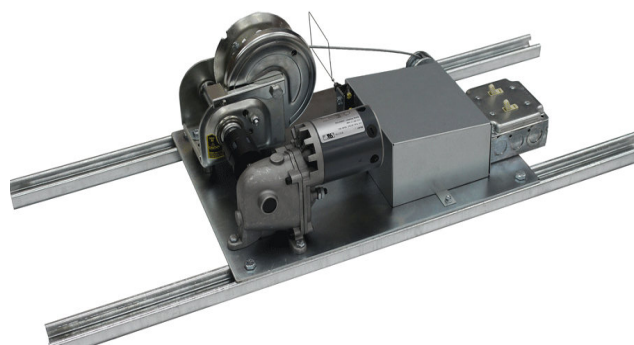
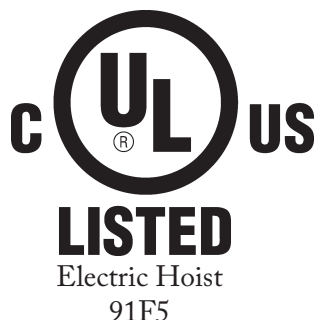
Maximum Lifting Capacity.....	300 lbs.
Application.....	Residential (Plastic dust cover and Romex)
Voltage.....	110V
Mounting Location.....	Standard Mount
	Directly above fixture only
Winch Cable Length.....	35 ft.
Light Wattage Capacity.....	1 x 15 amp circuit - 1650 watts
Controller.....	Keyswitch
Controller Wire.....	50 ft.
Dimensions of unit.....	14" wide x 19" long x 9" high
	Mounted on two 36" channel struts
Shipping Weight.....	47 lbs.

## Upgrades

Controller.....	Smart-Lift (see page 27)
	Wireless (see page 26)
Winch Cable Length.....	65 ft.
	90 ft.
	120 ft.
Light Wattage Capacity.....	1 x 20 amp circuit - 2200 watts
	2 x 15 amp circuits - 3300 watts
Controller Wire.....	100 ft.



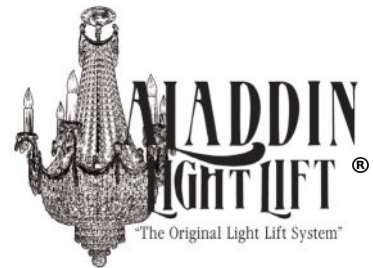
**ALADDIN®**





**MODEL  
NUMBER:**

**ALL700**



Patent #5105349 & 7410150 B1

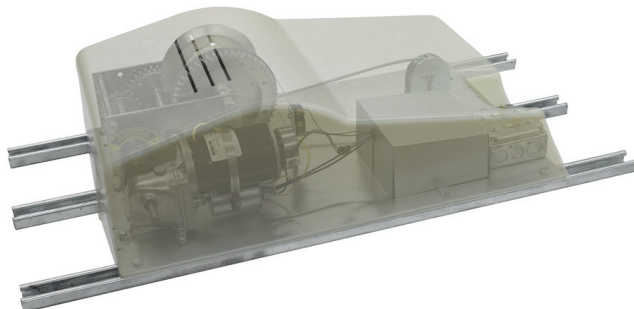
The ALL700 is a 'residential grade' motorized winch for the raising and lowering of a light fixture. This 'standard mount' lift is designed to be installed in accessible locations, directly above the fixture. Please see page 30 for 'standard mount' vs 'remote mount' diagram.

## Specifications

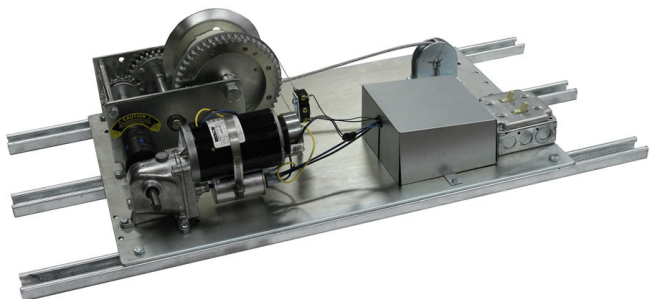
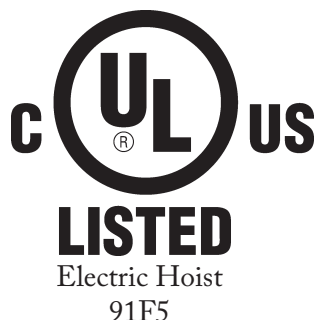
Maximum Lifting Capacity.....	700 lbs.
Application.....	Residential (Plastic dust cover and Romex)
Voltage.....	110V
Mounting Location.....	Standard Mount
	Directly above fixture only
Winch Cable Length.....	35 ft.
Light Wattage Capacity.....	1 x 20 amp circuit - 2200 watts
Controller.....	Smart-Lift
Controller Wire.....	50 ft.
Dimensions of unit.....	18" wide x 27.5" long x 9" high
	Mounted on three 38" channel struts
Shipping Weight.....	96 lbs.

## Upgrades

Controller.....	Wireless (see page26)
Winch Cable Length.....	65 ft.
	90 ft.
	120 ft.
Light Wattage Capacity.....	2 x 15 amp circuits - 3300 watts
Controller Wire.....	100 ft.

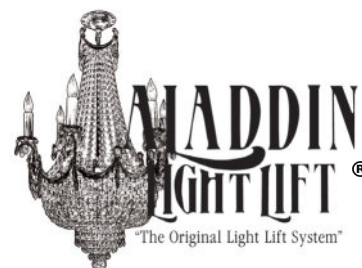


**ALADDIN®**



**MODEL  
NUMBER:**

**ALL1000**



Patent #5105349 & 7410150 B1

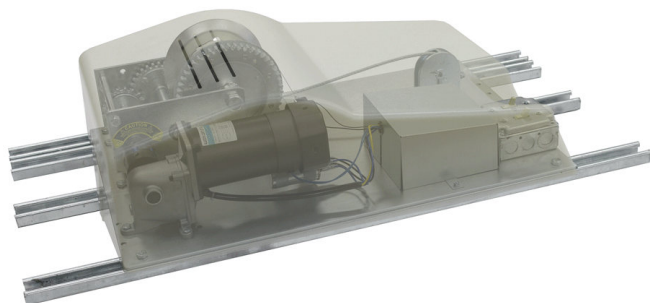
The ALL1000 is a 'residential grade' motorized winch for the raising and lowering of a light fixture. This 'standard mount' lift is designed to be installed in accessible locations, directly above the fixture. Please see page 30 for 'standard mount' vs 'remote mount' diagram.

## Specifications

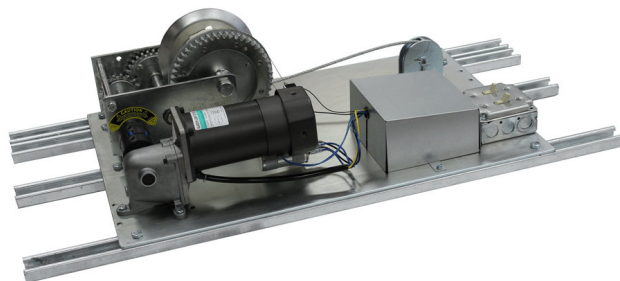
Maximum Lifting Capacity.....	1000 lbs.
Application.....	Residential (Plastic dust cover and Romex)
Voltage.....	110V
Mounting Location.....	Standard Mount Directly above fixture only
Winch Cable Length.....	35 ft.
Light Wattage Capacity.....	1 x 20 amp circuit - 2200 watts
Controller.....	Smart-Lift
Controller Wire.....	50 ft.
Dimensions of unit.....	18" wide x 27.5" long x 9" high Mounted on four 38" channel struts
Shipping Weight.....	98 lbs.

## Upgrades

Controller.....	Wireless (see page26)
Winch Cable Length.....	65 ft. 90 ft. 120 ft.
Light Wattage Capacity.....	2 x 15 amp circuits - 3300 watts
Controller Wire.....	100 ft.

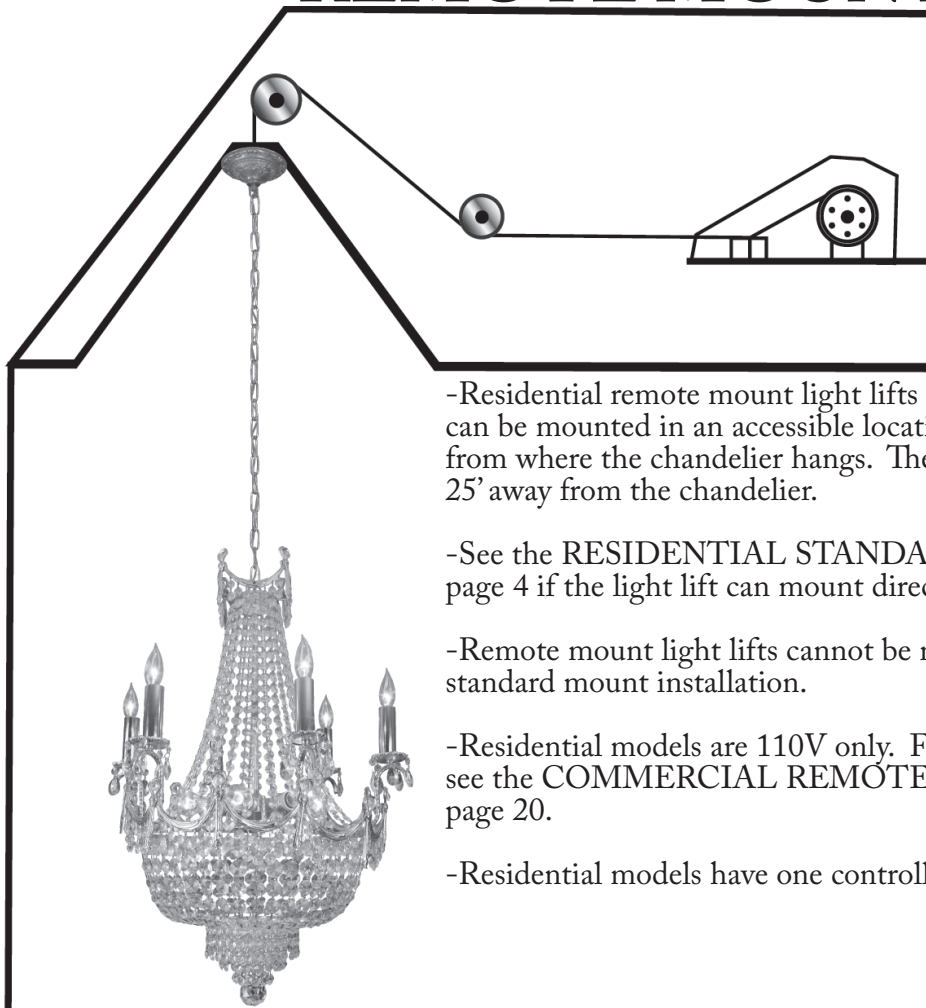


**ALADDIN®**





# RESIDENTIAL REMOTE MOUNT



-Residential remote mount light lifts are designed so the motor can be mounted in an accessible location that is offset (remote) from where the chandelier hangs. The motor can mount up to 25' away from the chandelier.

-See the RESIDENTIAL STANDARD MOUNT section on page 4 if the light lift can mount directly above the chandelier.

-Remote mount light lifts cannot be modified to allow for a standard mount installation.

-Residential models are 110V only. For 208V, 240V or 277V see the COMMERCIAL REMOTE MOUNT models on page 20.

-Residential models have one controller per lift.

-Remote mount light lifts will always be shipped with a fixture pulley assembly that mounts directly above the chandelier. See page 10 for fixture pulley dimensions.

-The cable must only travel up and down from the motor assembly, through the directional pulleys, and to the fixture pulley assembly. Aladdin strongly recommends avoiding lateral cable direction changes.

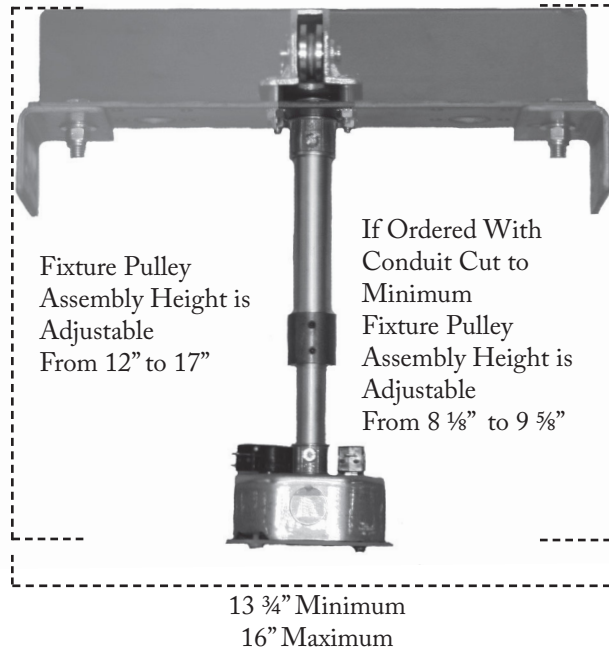
-Directional pulley(s) can be used to change the winch cable elevation between the motor assembly and fixture pulley assembly. There is no limit on the number of directional pulleys that can be ordered. When ordering, specify how many directional pulleys (AL-DP) are needed, if any. See page 10 for directional pulley diagrams.

-Determine the minimum length of winch cable necessary for installation. Minimum length of winch cable is determined by measuring from the motor assembly, through the directional pulleys, to the fixture pulley assembly, and down to the floor. Remote mount lifts come standard with 65' winch cable unless specified otherwise. (90ft. and 120ft. cable lengths are available)

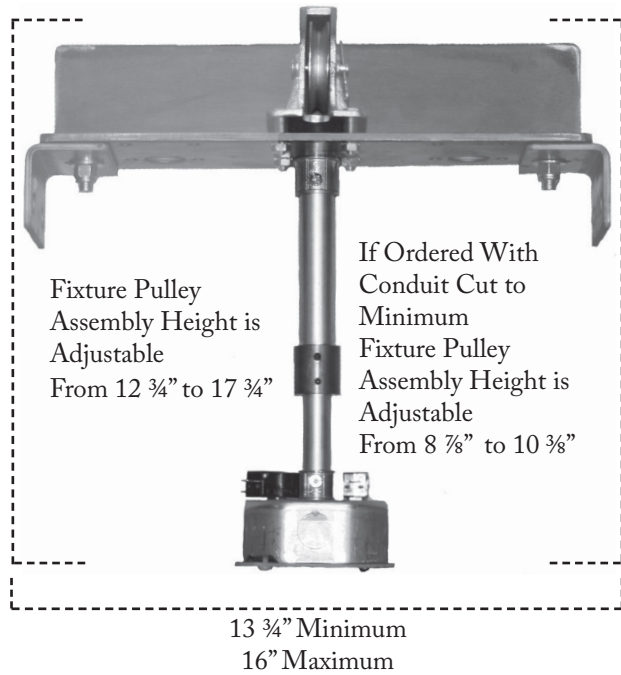
-Call Aladdin customer service at (256) 429-9700 or email [customerservice@aladdinlightlift.com](mailto:customerservice@aladdinlightlift.com) for ordering assistance.

For installation instructions, visit [www.aladdinlightlift.com/models](http://www.aladdinlightlift.com/models).

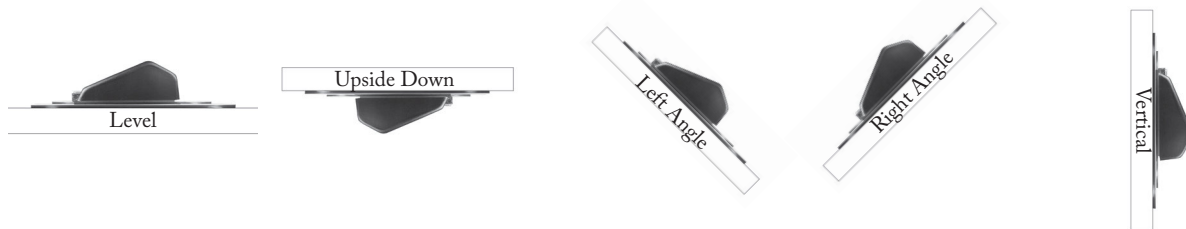
## ALL200RM/300RM Fixture Pulley Assembly



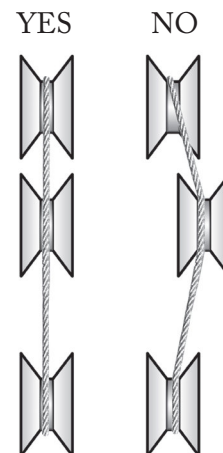
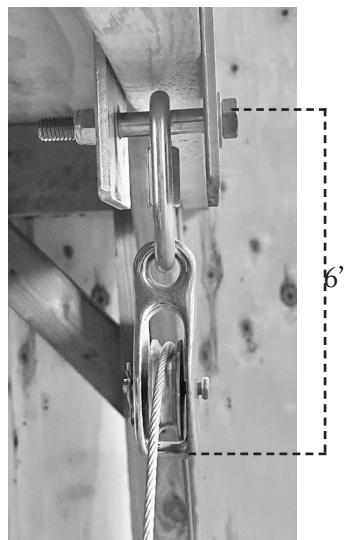
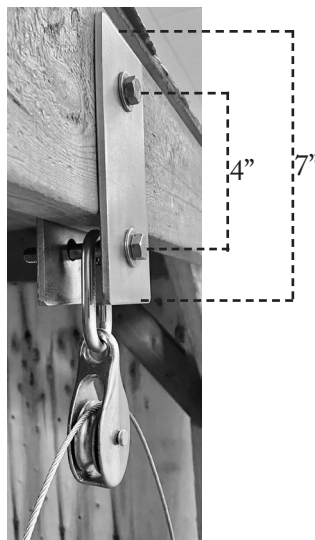
## ALL700RM/1000RM Fixture Pulley Assembly



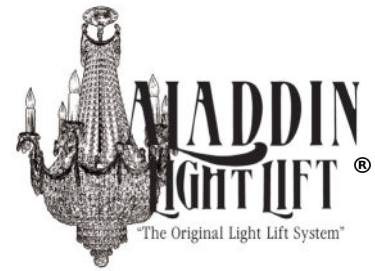
The remote mount light lift may be mounted on an angle, vertically, horizontally or upside down, if secured properly.. See diagram below for examples.



### Directional Pulley Diagrams (AL-DP)



# MODEL NUMBER: ALL200RM



Patent #5105349 & 7410150 B1

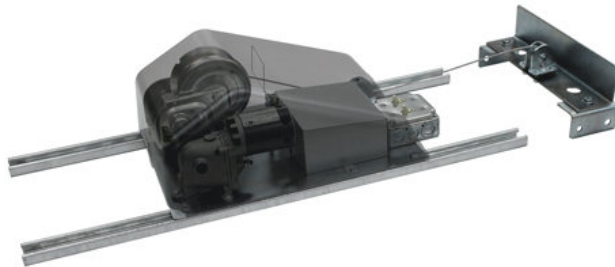
The ALL200RM is a 'residential grade' motorized winch for the raising and lowering of a light fixture. This 'remote mount' lift is designed to be installed in an offset location when there is limited access directly above the fixture. Please see page 30 for 'standard mount' vs 'remote mount' diagram.

## Specifications

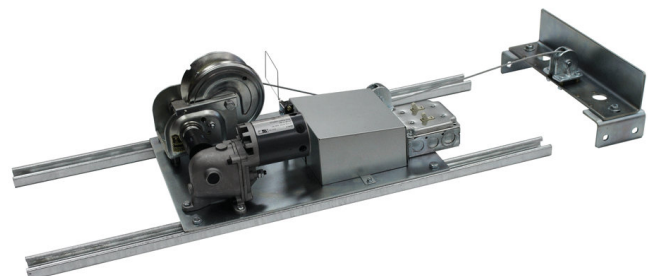
Maximum Lifting Capacity.....	200 lbs.
Application.....	Residential (Plastic dust cover and Romex)
Voltage.....	110V
Mounting Location.....	Remote Mount
	Motor offset up to 25 ft.
Winch Cable Length.....	65 ft.
Light Wattage Capacity.....	1 x 15 amp circuit - 1650 watts
Controller.....	Keyswitch
Controller Wire.....	50 ft.
Dimensions of unit.....	14" wide x 18" long x 9" high
	Mounted on two 36" channel struts
Shipping Weight.....	57 lbs.

## Upgrades

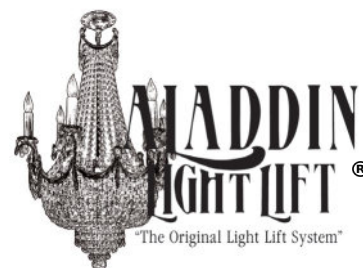
Controller.....	Smart-Lift (see page 27)
	Wireless (see page 26)
Winch Cable Length.....	90 ft.
	120 ft.
Light Wattage Capacity.....	1 x 20 amp circuit - 2200 watts
	2 x 15 amp circuits - 3300 watts
Controller Wire.....	100 ft.



# ALADDIN®



# MODEL NUMBER: ALL300RM



Patent #5105349 & 7410150 B1

The ALL300RM is a 'residential grade' motorized winch for the raising and lowering of a light fixture. This 'remote mount' lift is designed to be installed in an offset location when there is limited access directly above the fixture. Please see page 30 for 'standard mount' vs 'remote mount' diagram.

## Specifications

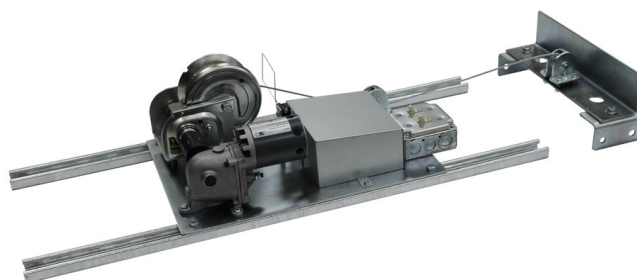
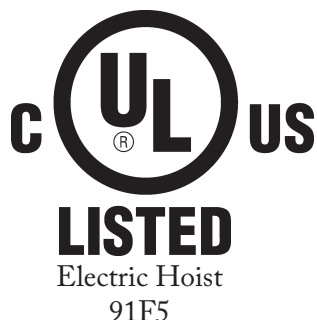
Maximum Lifting Capacity.....	300 lbs.
Application.....	Residential (Plastic dust cover and Romex)
Voltage.....	110V
Mounting Location.....	Remote Mount
	Motor offset up to 25 ft.
Winch Cable Length.....	65 ft.
Light Wattage Capacity.....	1 x 15 amp circuit - 1650 watts
Controller.....	Keyswitch
Controller Wire.....	50 ft.
Dimensions of unit.....	14" wide x 18" long x 9" high
	Mounted on two 36" channel struts
Shipping Weight.....	57 lbs.

## Upgrades

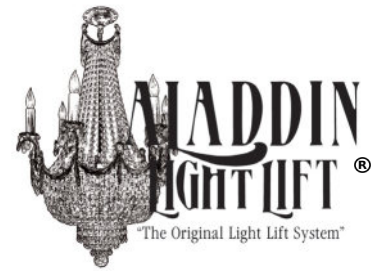
Controller.....	Smart-Lift (see page 27)
	Wireless (see page 26)
Winch Cable Length.....	90 ft.
	120 ft.
Light Wattage Capacity.....	1 x 20 amp circuit - 2200 watts
	2 x 15 amp circuits - 3300 watts
Controller Wire.....	100 ft.



# ALADDIN®



# MODEL NUMBER: ALL700RM



Patent #5105349 & 7410150 B1

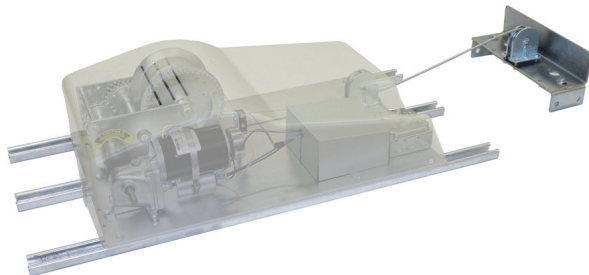
The ALL700RM is a 'residential grade' motorized winch for the raising and lowering of a light fixture. This 'remote mount' lift is designed to be installed in an offset location when there is limited access directly above the fixture. Please see page 30 for 'standard mount' vs 'remote mount' diagram.

## Specifications

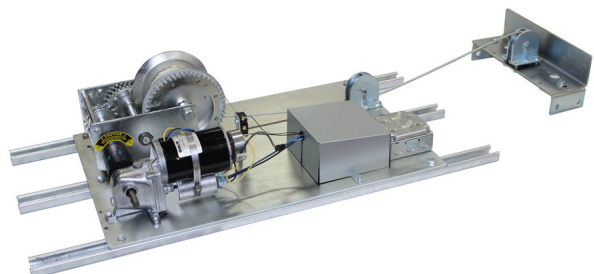
Maximum Lifting Capacity.....	700 lbs.
Application.....	Residential (Plastic dust cover and Romex)
Voltage.....	110V
Mounting Location.....	Remote Mount
	Motor offset up to 25 ft.
Winch Cable Length.....	65 ft.
Light Wattage Capacity.....	1 x 20 amp circuit - 2200 watts
Controller.....	Smart-Lift
Controller Wire.....	50 ft.
Dimensions of unit.....	18" wide x 27.5" long x 10" high
	Mounted on three 38" channel struts
Shipping Weight.....	111 lbs.

## Upgrades

Controller.....	Wireless (see page26)
Winch Cable Length.....	90 ft.
	120 ft.
Light Wattage Capacity.....	2 x 15 amp circuits - 3300 watts
Controller Wire.....	100 ft.



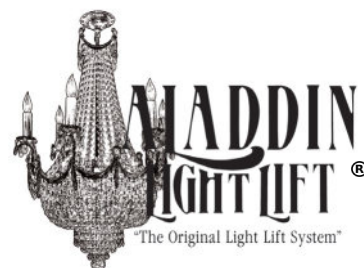
# ALADDIN®





MODEL  
NUMBER:

ALL1000RM



Patent #5105349 & 7410150 B1

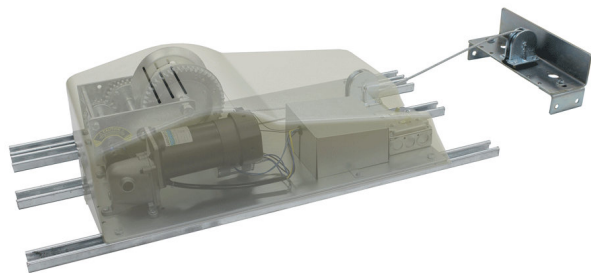
The ALL1000RM is a 'residential grade' motorized winch for the raising and lowering of a light fixture. This 'remote mount' lift is designed to be installed in an offset location when there is limited access directly above the fixture. Please see page 30 for 'standard mount' vs 'remote mount' diagram.

## Specifications

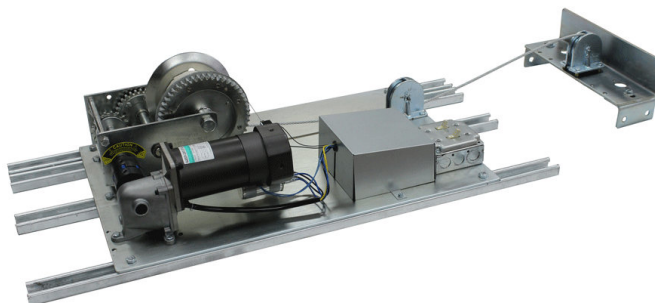
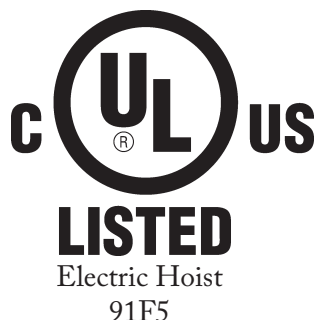
Maximum Lifting Capacity.....	1000 lbs.
Application.....	Residential (Plastic dust cover and Romex)
Voltage.....	110V
Mounting Location.....	Remote Mount
	Motor offset up to 25 ft.
Winch Cable Length.....	65 ft.
Light Wattage Capacity.....	1 x 20 amp circuit - 2200 watts
Controller.....	Smart-Lift
Controller Wire.....	50 ft.
Dimensions of unit.....	18" wide x 27.5" long x 10" high
	Mounted on four 38" channel struts
Shipping Weight.....	113 lbs.

## Upgrades

Controller.....	Wireless (see page26)
Winch Cable Length.....	90 ft.
	120 ft.
Light Wattage Capacity.....	2 x 15 amp circuits - 3300 watts
Controller Wire.....	100 ft.

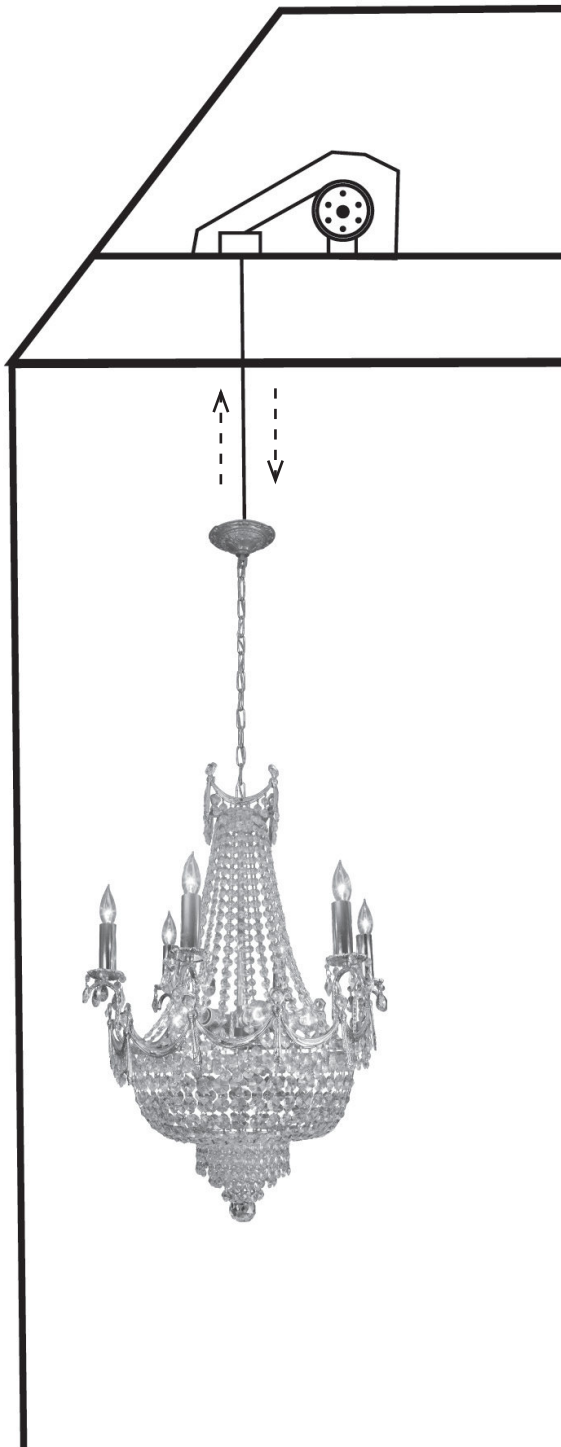


# ALADDIN®





# COMMERCIAL STANDARD MOUNT



-Standard mount light lifts can **ONLY** be mounted directly above the high bay fixture or chandelier.

-Aladdin recommends at least three feet of vertical access space directly above the fixture for installation and motor accessibility. Cat walk or man-lift accessibility is acceptable as well.

-Commercial models are available in 110V, 208V, 240V or 277V versions.

-If the high bay is square or rectangular in shape, please see page 29 for Torque Reel options.

-See the **COMMERCIAL REMOTE MOUNT** section on page 20 if the light lift cannot mount directly above the fixture.

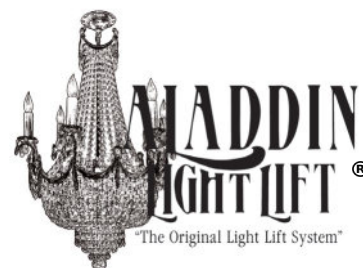
-Residential models are available. See the **RESIDENTIAL STANDARD MOUNT** section on page 4.

-Call Aladdin customer service at (256) 429-9700 or email [customerservice@aladdinlightlift.com](mailto:customerservice@aladdinlightlift.com) for ordering assistance

For installation instructions, visit [www.aladdinlightlift.com/models](http://www.aladdinlightlift.com/models).

**MODEL  
NUMBER:**

**ALL200-CM**



Patent #5105349 & 7410150 B1

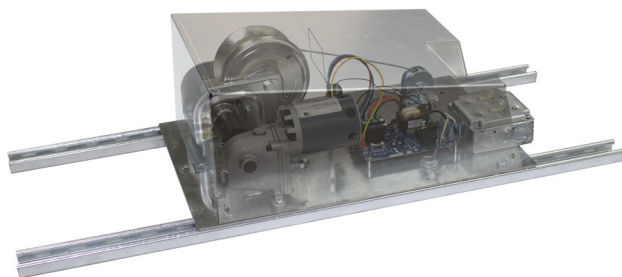
The ALL200-CM is a 'commercial grade' motorized winch for the raising and lowering of a light fixture. This 'standard mount' lift is designed to be installed in accessible locations, directly above the fixture. Please see page 30 for 'standard mount' vs 'remote mount' diagram.

## Specifications

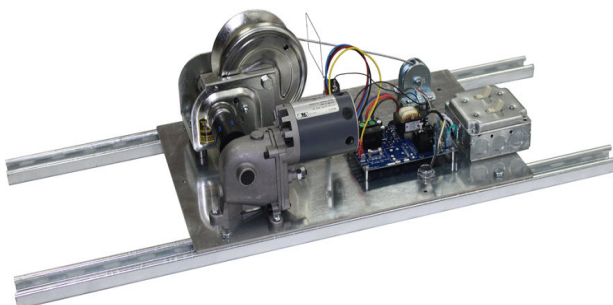
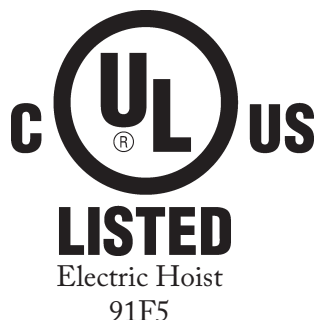
Maximum Lifting Capacity.....	200 lbs.
Application.....	Commercial (Metal dust cover and MC Cable)
Voltage.....	110V (Also available in 208V, 240V or 277V)
Mounting Location.....	Standard Mount Directly above fixture only
Winch Cable Length.....	35 ft.
Light Wattage Capacity.....	1 x 15 amp circuit - 1650 watts
Controller.....	Keyswitch
Controller Wire.....	50 ft.
Dimensions of unit.....	14" wide x 20.5" long x 9" high Mounted on two 36" channel struts
Shipping Weight.....	57 lbs.

## Upgrades

Controller.....	Smart-Lift (see page 27) Wireless (see page 26)
Winch Cable Length.....	65 ft. 90 ft. 120 ft.
Light Wattage Capacity.....	1 x 20 amp circuit - 2200 watts 2 x 15 amp circuits - 3300 watts
Controller Wire.....	100 ft.

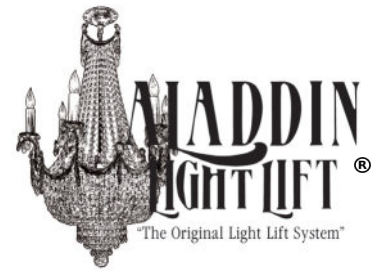


**ALADDIN®**



**MODEL  
NUMBER:**

**ALL300-CM**



**Patent #5105349 & 7410150 B1**

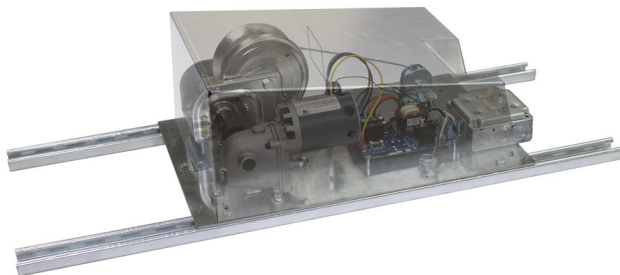
The ALL300-CM is a 'commercial grade' motorized winch for the raising and lowering of a light fixture. This 'standard mount' lift is designed to be installed in accessible locations, directly above the fixture. Please see page 30 for 'standard mount' vs 'remote mount' diagram.

## **Specifications**

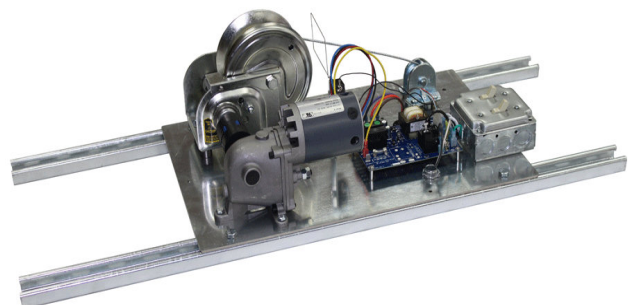
Maximum Lifting Capacity.....	300 lbs.
Application.....	Commercial (Metal dust cover and MC Cable)
Voltage.....	110V (Also available in 208V, 240V or 277V)
Mounting Location.....	Standard Mount Directly above fixture only
Winch Cable Length.....	35 ft.
Light Wattage Capacity.....	1 x 15 amp circuit - 1650 watts
Controller.....	Keyswitch
Controller Wire.....	50 ft.
Dimensions of unit.....	14" wide x 20.5" long x 9" high Mounted on two 36" channel struts
Shipping Weight.....	57 lbs.

## **Upgrades**

Controller.....	Smart-Lift (see page 27) Wireless (see page 26)
Winch Cable Length.....	65 ft. 90 ft. 120 ft.
Light Wattage Capacity.....	1 x 20 amp circuit - 2200 watts 2 x 15 amp circuits - 3300 watts
Controller Wire.....	100 ft.

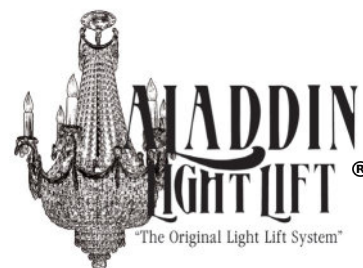


**ALADDIN®**



**MODEL  
NUMBER:**

**ALL700-CM**



Patent #5105349 & 7410150 B1

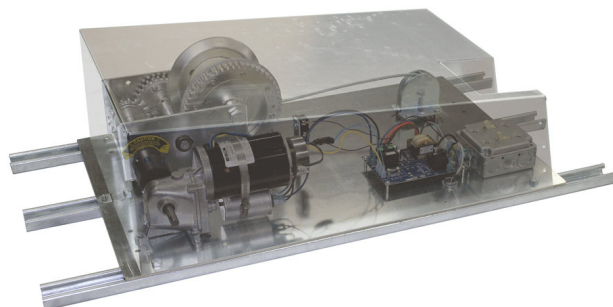
The ALL700-CM is a 'commercial grade' motorized winch for the raising and lowering of a light fixture. This 'standard mount' lift is designed to be installed in accessible locations, directly above the fixture. Please see page 30 for 'standard mount' vs 'remote mount' diagram.

## Specifications

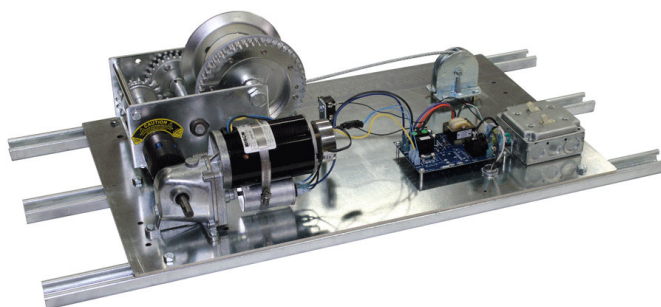
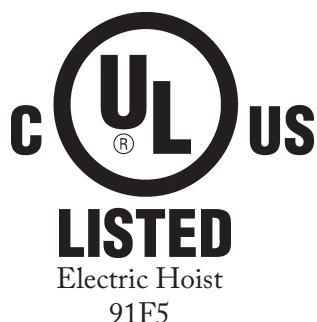
Maximum Lifting Capacity.....	700 lbs.
Application.....	Commercial (Metal dust cover and MC Cable)
Voltage.....	110V (Also available in 208V, 240V or 277V)
Mounting Location.....	Standard Mount
	Directly above fixture only
Winch Cable Length.....	35 ft.
Light Wattage Capacity.....	1 x 20 amp circuit - 2200 watts
Controller.....	Smart-Lift
Controller Wire.....	50 ft.
Dimensions of unit.....	18" wide x 29.5" long x 10" high
	Mounted on three 38" channel struts
Shipping Weight.....	110 lbs.

## Upgrades

Controller.....	Wireless (see page26)
Winch Cable Length.....	65 ft.
	90 ft.
	120 ft.
Light Wattage Capacity.....	2 x 15 amp circuits - 3300 watts
Controller Wire.....	100 ft.



**ALADDIN®**



# MODEL NUMBER: ALL1000-CM



Patent #5105349 & 7410150 B1

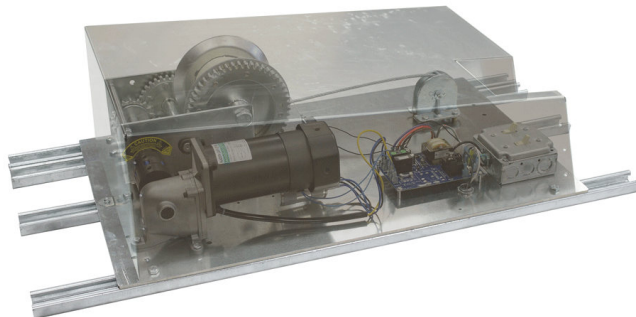
The ALL1000-CM is a 'commercial grade' motorized winch for the raising and lowering of a light fixture. This 'standard mount' lift is designed to be installed in accessible locations, directly above the fixture. Please see page 30 for 'standard mount' vs 'remote mount' diagram.

## Specifications

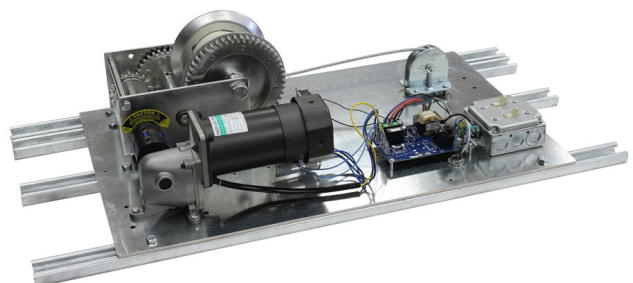
Maximum Lifting Capacity.....	1000 lbs.
Application.....	Commercial (Metal dust cover and MC Cable)
Voltage.....	110V (Also available in 208V, 240V or 277V)
Mounting Location.....	Standard Mount Directly above fixture only
Winch Cable Length.....	35 ft.
Light Wattage Capacity.....	1 x 20 amp circuit - 2200 watts
Controller.....	Smart-Lift
Controller Wire.....	50 ft.
Dimensions of unit.....	18" wide x 29.5" long x 10" high Mounted on four 38" channel struts
Shipping Weight.....	112 lbs.

## Upgrades

Controller.....	Wireless (see page26)
Winch Cable Length.....	65 ft. 90 ft. 120 ft.
Light Wattage Capacity.....	2 x 15 amp circuits - 3300 watts
Controller Wire.....	100 ft.

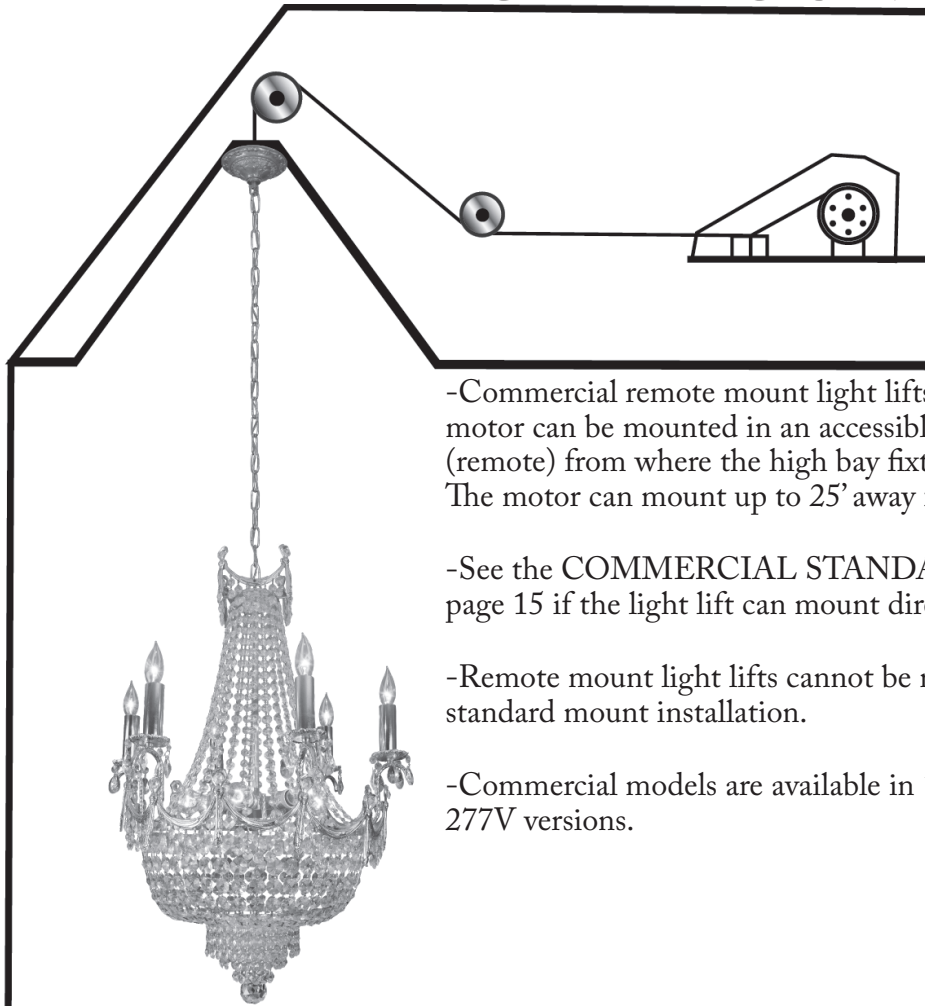


# ALADDIN®





# COMMERCIAL REMOTE MOUNT



-Commercial remote mount light lifts are designed so that the motor can be mounted in an accessible location that is offset (remote) from where the high bay fixture or chandelier hangs. The motor can mount up to 25' away from the fixture.

-See the COMMERCIAL STANDARD MOUNT section on page 15 if the light lift can mount directly above the fixture.

-Remote mount light lifts cannot be modified to allow for a standard mount installation.

-Commercial models are available in 110V, 208V, 240V or 277V versions.

-Remote mount light lifts come standard with a fixture pulley assembly that mounts directly above the high bay fixture or chandelier. See page 21 for fixture pulley dimensions.

-The winch cable must only travel up and down from the motor assembly, through the directional pulleys, and to the fixture pulley assembly. Aladdin strongly recommends avoiding lateral cable direction changes.

-Directional pulley(s) can be used to change the winch cable elevation between the motor assembly and fixture pulley assembly. There is no limit on the number of directional pulleys that can be ordered. When ordering, specify how many directional pulleys (AL-DP) are needed, if any. See page 21 for directional pulley diagrams.

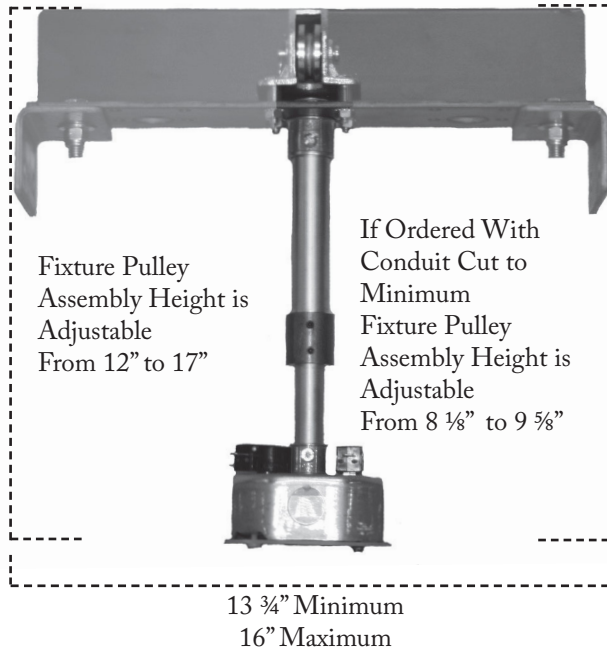
-Determine the minimum length of winch cable necessary for installation. Minimum length of winch cable is determined by measuring from the motor assembly, through the directional pulleys, to the fixture pulley assembly, and down to the floor. Remote mount lifts come standard with 65' winch cables unless specified otherwise. (90ft. and 120ft. cable lengths are available)

-Call Aladdin customer service at (256) 429-9700 or email [customerservice@aladdinlightlift.com](mailto:customerservice@aladdinlightlift.com) for ordering assistance.

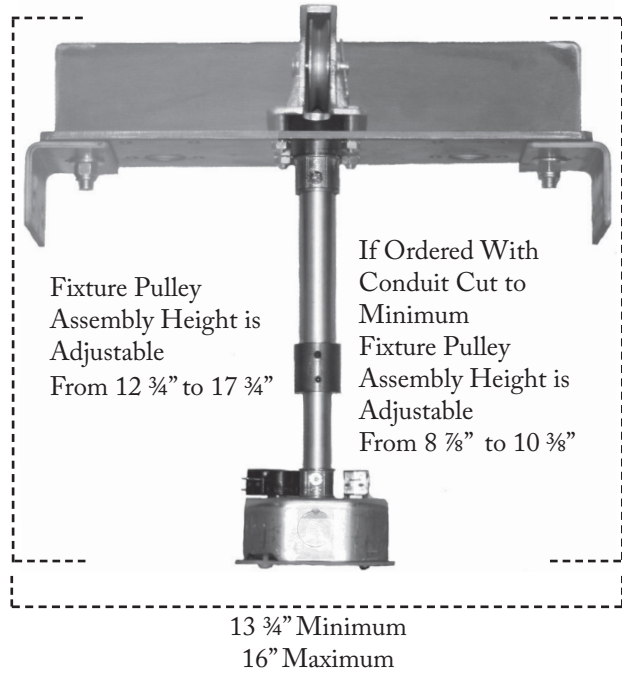
For installation instructions, visit [www.aladdinlightlift.com/models](http://www.aladdinlightlift.com/models).



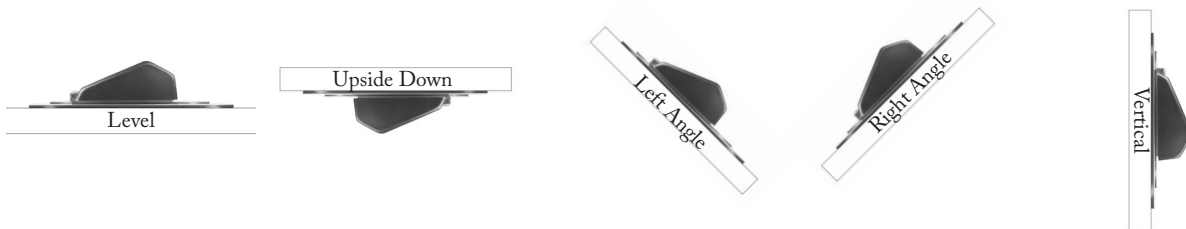
## ALL200RM-CM/300RM-CM Fixture Pulley Assembly



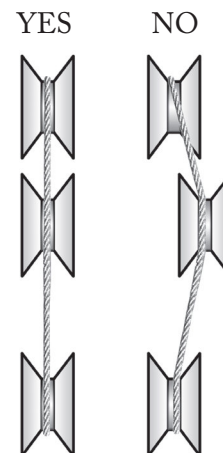
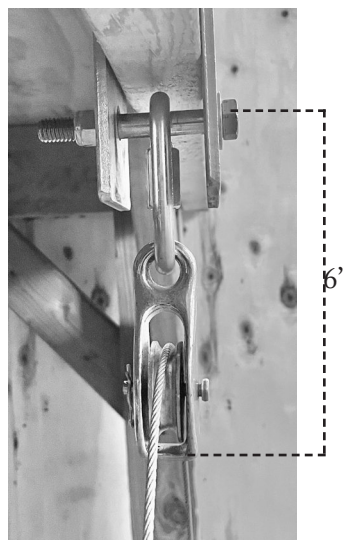
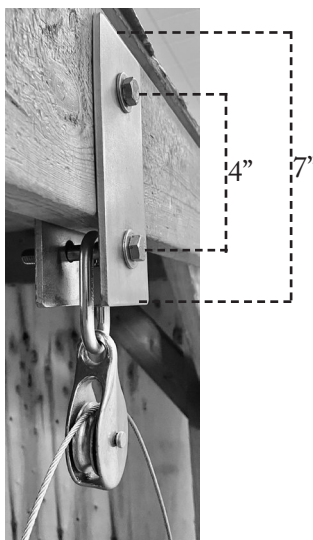
## ALL700RM-CM/1000RM-CM Fixture Pulley Assembly



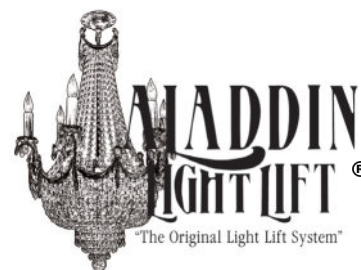
The remote mount light lift may be mounted on an angle, vertically, horizontally or upside down, if secured properly.. See diagram below for examples.



### Directional Pulley Diagrams (AL-DP)



# MODEL NUMBER: ALL200RM-CM



Patent #5105349 & 7410150 B1

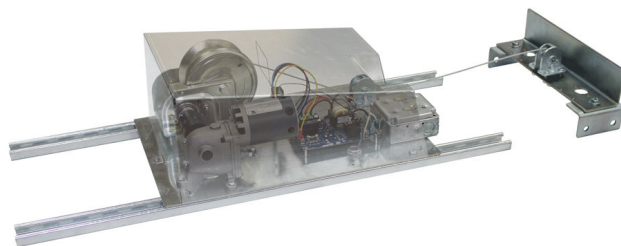
The ALL200RM-CM is a 'commercial grade' motorized winch for the raising and lowering of a light fixture. This 'remote mount' lift is designed to be installed in an offset location when there is limited access directly above the fixture. Please see page 30 for 'standard mount' vs 'remote mount' diagram.

## Specifications

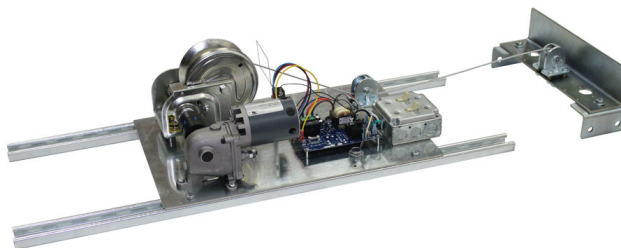
Maximum Lifting Capacity.....	200 lbs.
Application.....	Commercial (Metal dust cover and MC Cable)
Voltage.....	110V (Also available in 208V, 240V or 277V)
Mounting Location.....	Remote Mount
	Motor offset up to 25 ft.
Winch Cable Length.....	65 ft.
Light Wattage Capacity.....	1 x 15 amp circuit - 1650 watts
Controller.....	Keyswitch
Controller Wire.....	50 ft.
Dimensions of unit.....	14" wide x 20.5" long x 9" high
	Mounted on two 36" channel struts
Shipping Weight.....	67 lbs.

## Upgrades

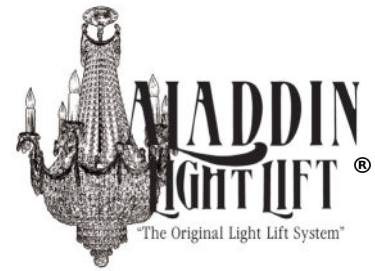
Controller.....	Smart-Lift (see page 27)
	Wireless (see page 26)
Winch Cable Length.....	90 ft.
	120 ft.
Light Wattage Capacity.....	1 x 20 amp circuit - 2200 watts
	2 x 15 amp circuits - 3300 watts
Controller Wire.....	100 ft.



# ALADDIN®



# MODEL NUMBER: ALL300RM-CM



Patent #5105349 & 7410150 B1

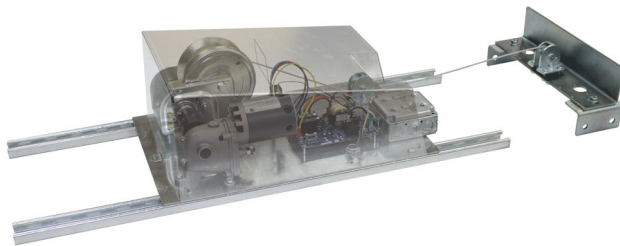
The ALL300RM-CM is a 'commercial grade' motorized winch for the raising and lowering of a light fixture. This 'remote mount' lift is designed to be installed in an offset location when there is limited access directly above the fixture. Please see page 30 for 'standard mount' vs 'remote mount' diagram.

## Specifications

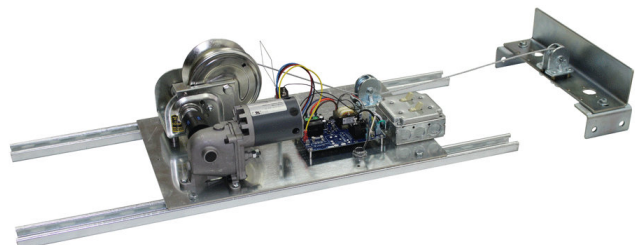
Maximum Lifting Capacity.....	300 lbs.
Application.....	Commercial (Metal dust cover and MC Cable)
Voltage.....	110V (Also available in 208V, 240V or 277V)
Mounting Location.....	Remote Mount
	Motor offset up to 25 ft.
Winch Cable Length.....	65 ft.
Light Wattage Capacity.....	1 x 15 amp circuit - 1650 watts
Controller.....	Keyswitch
Controller Wire.....	50 ft.
Dimensions of unit.....	14" wide x 20.5" long x 9" high
	Mounted on two 36" channel struts
Shipping Weight.....	67 lbs.

## Upgrades

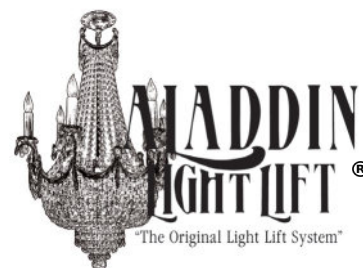
Controller.....	Smart-Lift (see page 27)
	Wireless (see page 26)
Winch Cable Length.....	90 ft.
	120 ft.
Light Wattage Capacity.....	1 x 20 amp circuit - 2200 watts
	2 x 15 amp circuits - 3300 watts
Controller Wire.....	100 ft.



# ALADDIN®



MODEL  
NUMBER: **ALL700RM-CM**



Patent #5105349 & 7410150 B1

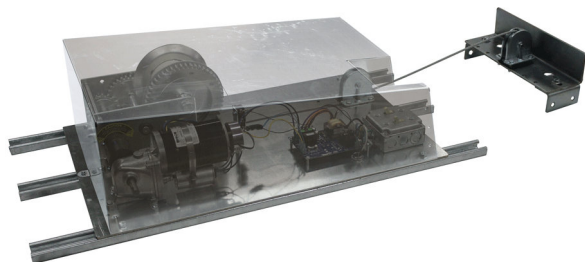
The ALL700RM-CM is a 'commercial grade' motorized winch for the raising and lowering of a light fixture. This 'remote mount' lift is designed to be installed in an offset location when there is limited access directly above the fixture. Please see page 30 for 'standard mount' vs 'remote mount' diagram.

## Specifications

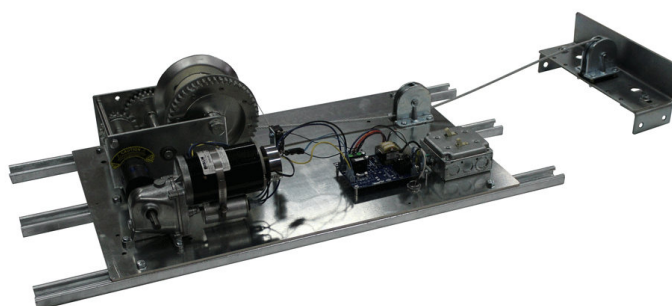
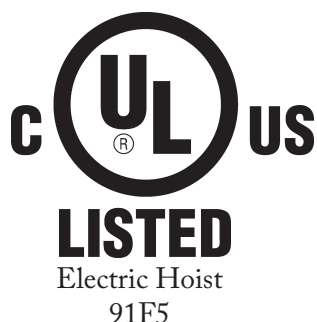
Maximum Lifting Capacity.....	700 lbs.
Application.....	Commercial (Metal dust cover and MC Cable)
Voltage.....	110V (Also available in 208V, 240V or 277V)
Mounting Location.....	Remote Mount
	Motor offset up to 25 ft.
Winch Cable Length.....	65 ft.
Light Wattage Capacity.....	1 x 20 amp circuit - 2200 watts
Controller.....	Smart-Lift
Controller Wire.....	50 ft.
Dimensions of unit.....	18" wide x 29.5" long x 10" high
	Mounted on three 38" channel struts
Shipping Weight.....	125 lbs.

## Upgrades

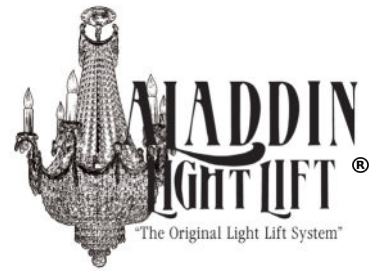
Controller.....	Wireless (see page26)
Winch Cable Length.....	90 ft.
	120 ft.
Light Wattage Capacity.....	2 x 15 amp circuits - 3300 watts
Controller Wire.....	100 ft.



**ALADDIN®**



# MODEL NUMBER: ALL1000RM-CM



Patent #5105349 & 7410150 B1

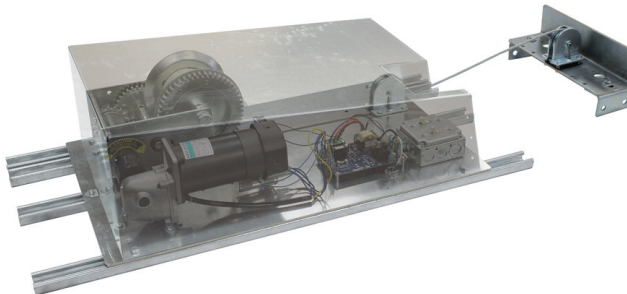
The ALL1000RM-CM is a 'commercial grade' motorized winch for the raising and lowering of a light fixture. This 'remote mount' lift is designed to be installed in an offset location when there is limited access directly above the fixture. Please see page 30 for 'standard mount' vs 'remote mount' diagram.

## Specifications

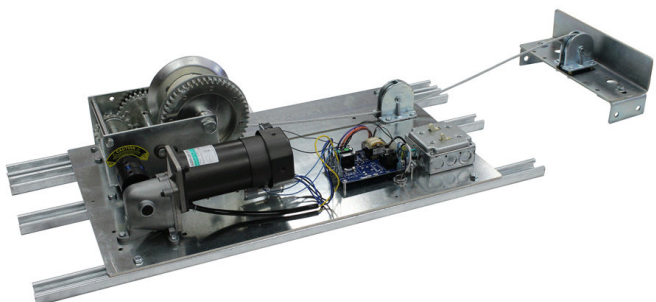
Maximum Lifting Capacity.....	1000 lbs.
Application.....	Commercial (Metal dust cover and MC Cable)
Voltage.....	110V (Also available in 208V, 240V or 277V)
Mounting Location.....	Remote Mount
	Motor offset up to 25 ft.
Winch Cable Length.....	65 ft.
Light Wattage Capacity.....	1 x 20 amp circuit - 2200 watts
Controller.....	Smart-Lift
Controller Wire.....	50 ft.
Dimensions of unit.....	18" wide x 29.5" long x 10" high
	Mounted on four 38" channel struts
Shipping Weight.....	127 lbs.

## Upgrades

Controller.....	Wireless (see page26)
Winch Cable Length.....	90 ft.
	120 ft.
Light Wattage Capacity.....	2 x 15 amp circuits - 3300 watts
Controller Wire.....	100 ft.



# ALADDIN®





# WIRELESS CONTROLLER

## Part # AL-WLC



Aladdin's Wireless Controller is perfect for new and existing Aladdin Light Lifts. The Wireless Controller can be ordered separately or as an optional upgrade.

-Eliminates the hassle of installing a wired key-switch in your wall.

-The Multi-Directional RF antenna is strong enough for all ceiling heights.

-Equipped with safety features to protect against unwanted use. Deactivates after 30 seconds of inactivity.

-Model # AL-WLC includes handheld controller and wireless transmitter.

Please Note: Aladdin Light Lifts have been proudly UL listed for over 30 years. This wireless controller was created due to overwhelming demand. It works seamlessly with every Aladdin Light Lift. However, the Wireless Controller does NOT carry a UL listing

Pictured above: Model # AL-WLC wireless transmitter w/ handheld controller.



# UPGRADES

## Smart-Lift Controller

The Smart-Lift Controller is designed to operate the light lift using touch pad controls. It can be programmed to automatically stop the lift at a desired height above the floor. It automatically shuts off at the ceiling without being programmed. By removing the key, the Smart-Lift Controller becomes child resistant and prevents accidental activation of the light lift.



## Key-Switch Controller

The Key-Switch Controller is designed to operate the light lift with the simple turning and holding of a key. By removing the key, the Key-Switch Controller becomes child resistant and prevents accidental activation of the light lift.



## Voltage Options

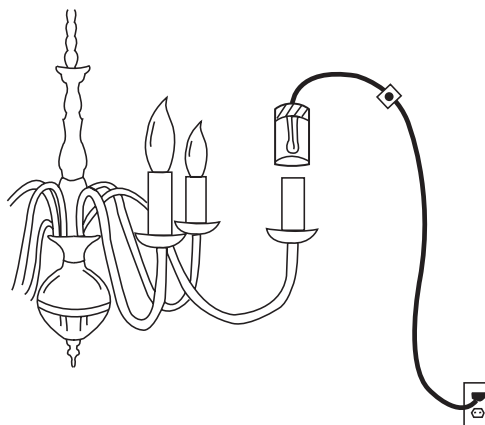
Commercial and Residential models are manufactured with 110V light and motor packages. Commercial models are also available in the following versions:

208V, 240V, or 277V

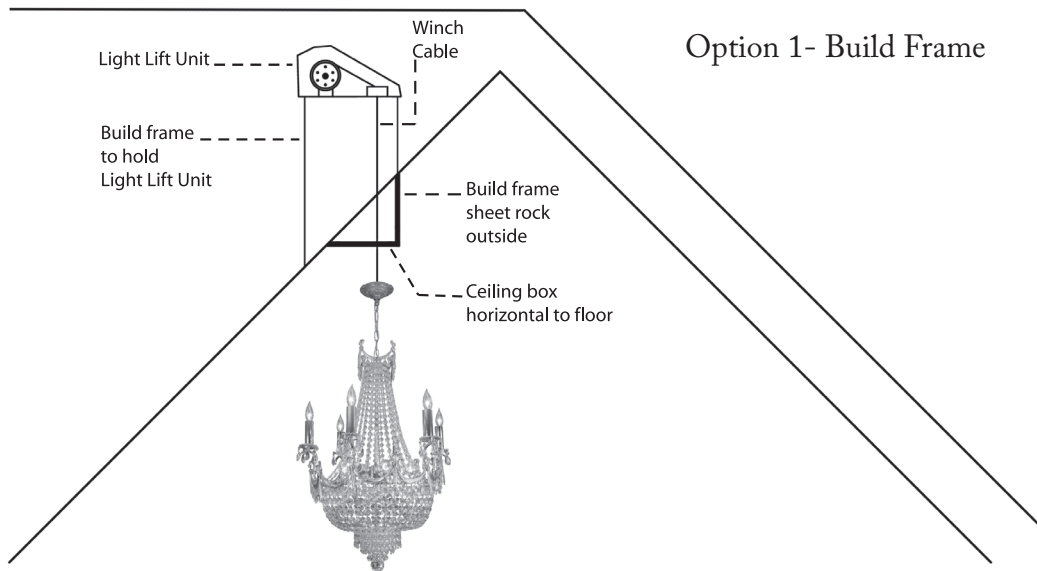
Voltage upgrades must be specified at time of order.

## Relamping Cord

The Relamping Cord is used to temporarily relight a candelabra-base chandelier at floor level. After removing one bulb, thread the socket end of the six foot Relamping Cord into a socket of the chandelier. Plug other end to a 110V outlet. Press the safety switch to light the chandelier in order to determine which bulbs should be changed.



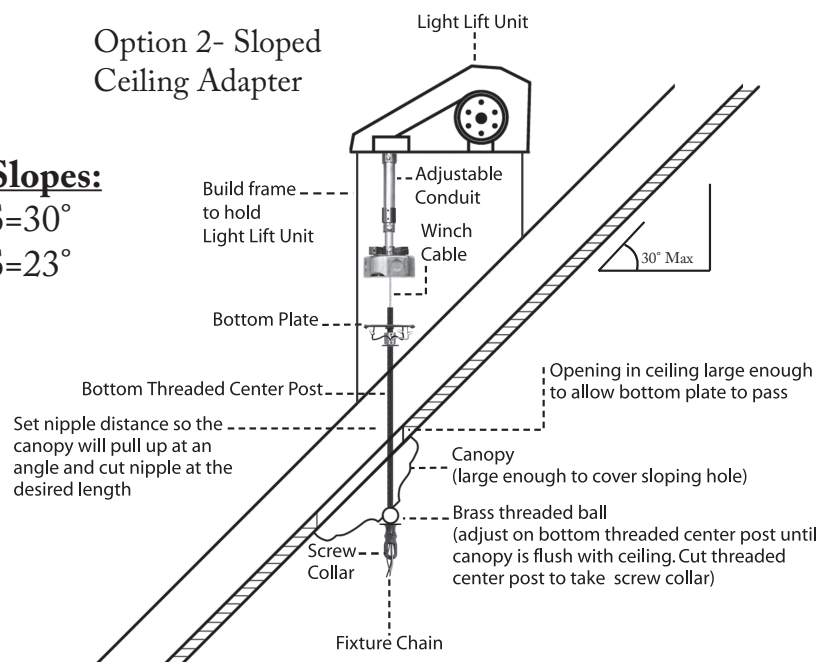
# SPECIAL MOUNT: SLOPED CEILINGS



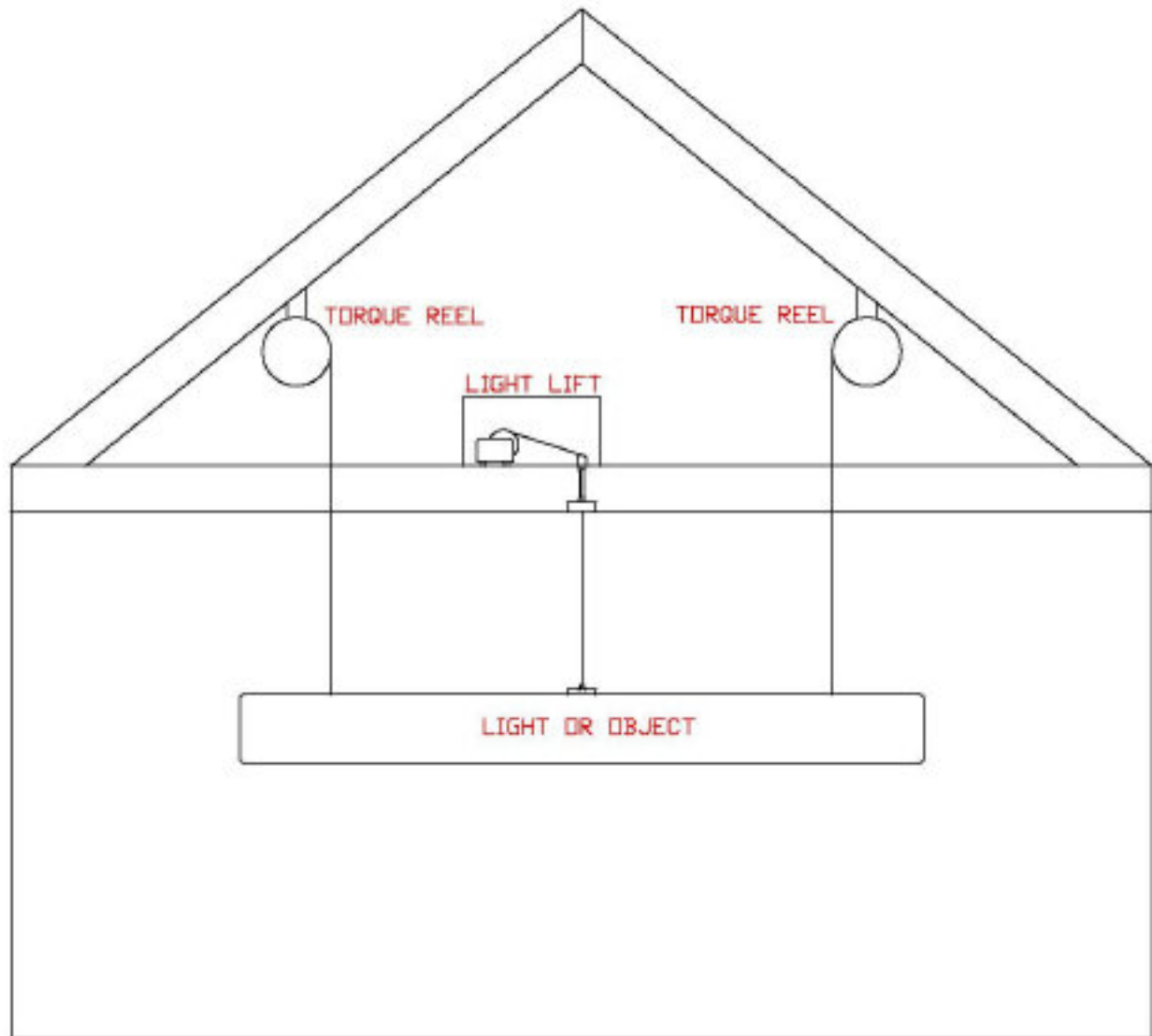
## Max Slopes:

$\frac{1}{4}$  IPS =  $30^\circ$

$\frac{3}{8}$  IPS =  $23^\circ$



# SPECIAL MOUNT: TORQUE REELS



Aladdin Light Lifts can be installed with two torque reels when returning a fixture to the ceiling in the same orientation from which it was lowered.

This type of installation requires the light fixture or object being lowered to be balanced. A center attachment is needed for the Aladdin Light Lift to carry the weight. The torque reels are for orientation and guide purposes and do not carry any weight.

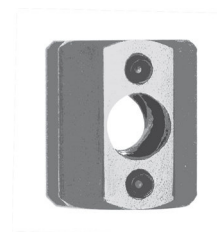
Email [customerservice@aladdinlightlift.com](mailto:customerservice@aladdinlightlift.com) or call (256) 429-9700 for installation directions and torque reel specs.

# FIXTURE INSTALLATION HARDWARE

**Aladdin Fixture Couplers:** Aladdin lifts utilize the industry standard IPS threaded stem connection. See size chart below:

IPS	Outside Diameter (OD)	Threads Per Inch (TPI)
1/8	3/8"	27
1/4	1/2"	18
3/8	5/8"	18
1/2	3/4"	14
3/4	1"	14

**Metric Couplers:** Some international chandelier manufacturers utilize metric threaded stems. Aladdin offers fixture couplers to accept metric sizes M10, M13, M16 and M22.



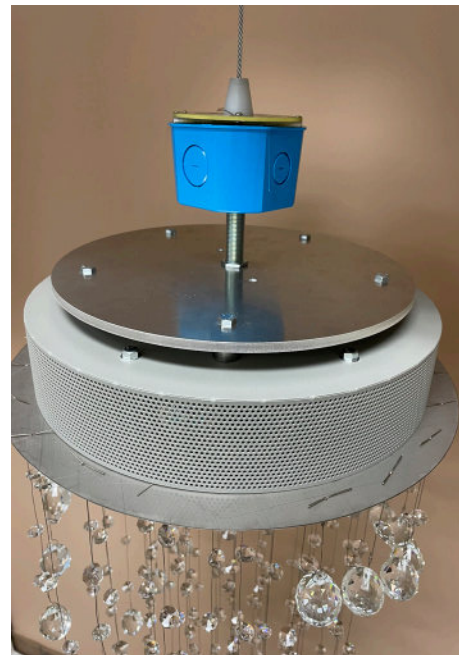
**Shackle Kit:** Some chandeliers utilize a 'closed loop' or 'hook' mounting design. Aladdin offers a shackle kit to replace our fixture coupler for those types of fixtures.



**Flush Mount Chandelier:** Some chandeliers utilize a 'flush mount' or 'pendant style' canopy design. Aladdin offers adapter kits for these types of installs. SEE the next page (31).

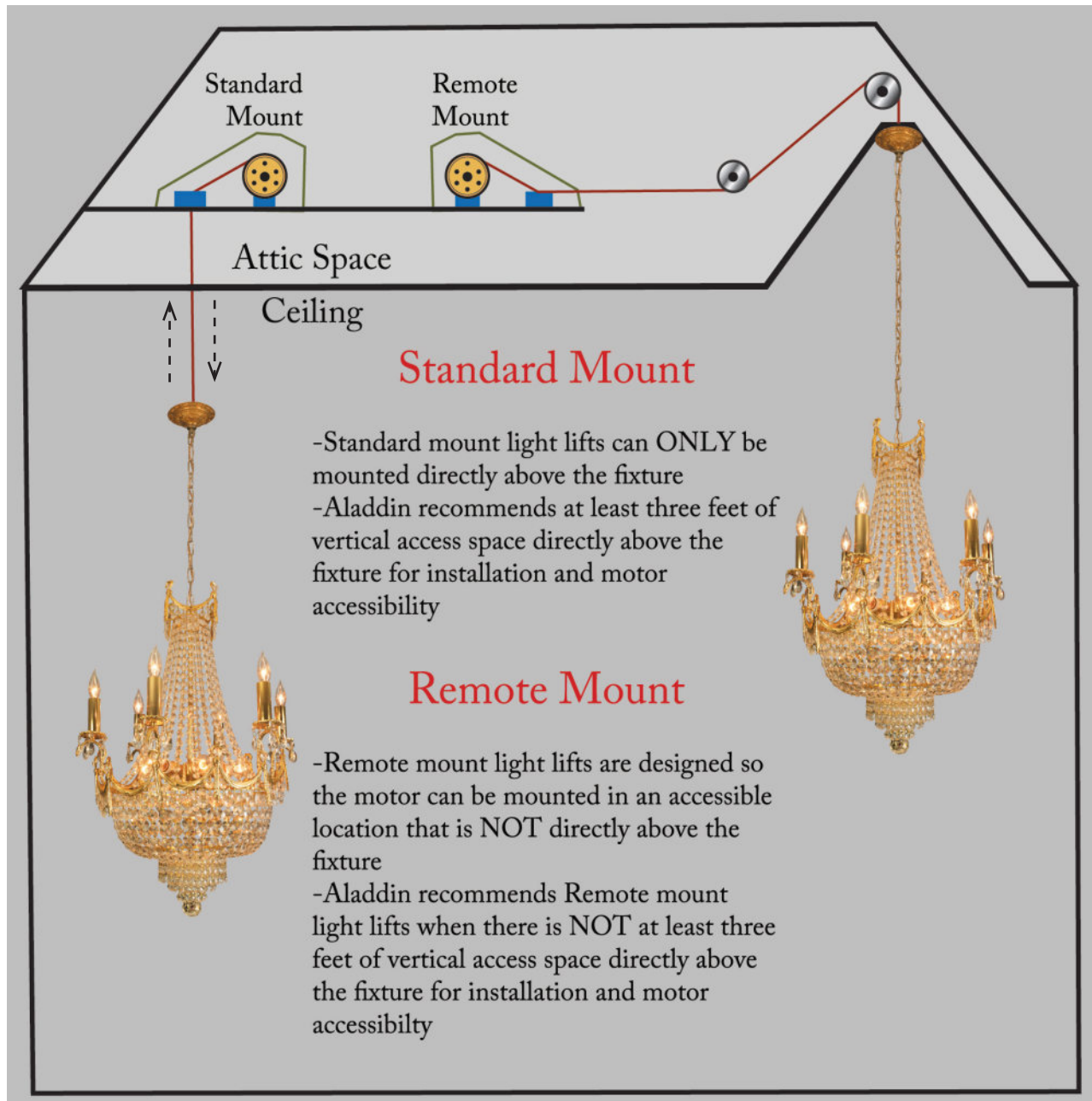
# ALADDIN FLUSH MOUNT ADAPTER KITS

Typically, chandeliers are installed with one attachment point. However, many chandeliers sold today are 'flush mount' or 'pendant style' which include mounting brackets with multiple attachment points. These mounting brackets hold the chandelier 'flush' to the ceiling. Order a Flush Mount Adaptor if you plan to install a 'flush mount' or 'pendant style' chandelier to an Aladdin Light Lift. Flush Mount Adaptors to fit 4" to 24" mounting brackets are in stock. Custom size Flush Mount Adaptors are available if needed.





# STANDARD MOUNT VS REMOTE MOUNT





# WARRANTY AGREEMENT

Aladdin Light Lift, Inc. warrants its chandelier light lift unit for one year from the date of purchase. The warranty includes all parts provided the unit is installed properly by a licensed electrician. Labor charges will be the responsibility of the purchaser. If the unit does not operate properly, the purchaser must contact a factory authorized service technician approved by Aladdin Light Lift, Inc. to determine if the unit was installed properly. The technician will furnish a written report to the purchaser and Aladdin concerning any problem with the lift system which will be binding on all parties concerned. All defective parts must be returned to Aladdin Light Lift, Inc. for the warranty to apply. Any alteration or by-passing of the electrical or mechanical system of exceeding the wattage maximum (as indicated on the lift) will void the warranty and can result in an electrical hazard. This warranty agreement showing date of purchase and distributor must be filled out at [www.aladdinlightlift.com/warranty-card.php](http://www.aladdinlightlift.com/warranty-card.php) within 30 days of purchase to validate the warranty. Call your distributor to obtain the name of a factory authorized technician in your area.

# RMA POLICY

Retuned merchandise to Aladdin Light Lift must accompany a factory issued, RMA number. Customers returning merchandise must follow these instructions to obtain an RMA number:

1. Distributors or end users should send an email requesting an RMA number to [customerservice@aladdinlightlift.com](mailto:customerservice@aladdinlightlift.com). Email should contain the original purchase order number, invoice number, or customer number. If faxing requests is preferred, use fax number (256) 429-9708. Allow 1 to 5 business days from date of request to receive RMA numbers.
2. Ship merchandise back to 61 Shields Road, Huntsville, AL 35811. Aladdin Light Lift is not responsible for any shipping charges related to the returned merchandise.
3. Allow 2 to 3 weeks for inspection of returned merchandise.

Please note the following:

- Credits will be issued for defective merchandise retuned by an authorized Aladdin Light Lift distributor.

- Restocking fees of at least 25% are issued for non-defective material.

- No credit (full or partial) will be issued for any merchandise retuned that is greater than 12 months old.

- Details regarding merchandise returned by non-authorized Aladdin Light Lift distributors will be determined at the time of RMA request.

- Aladdin only issues credits to authorized Aladdin Light Lift distributors.